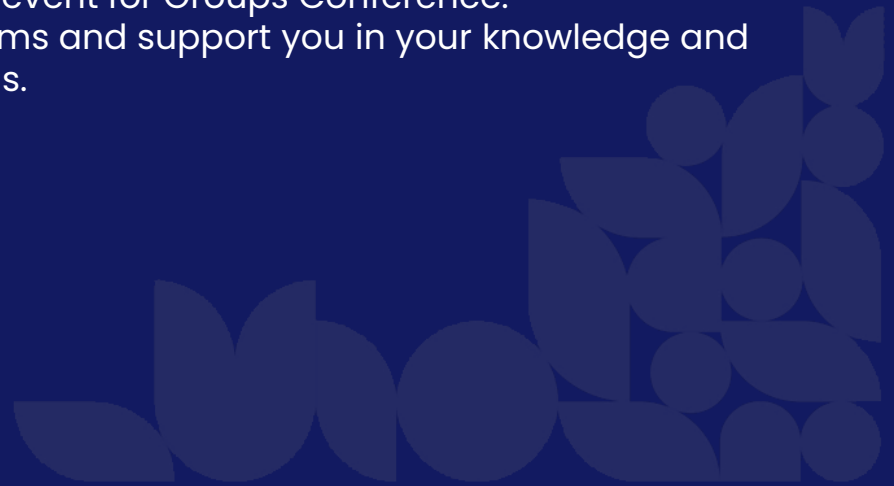


Groups Conference Welcome Induction

Hello and welcome to the Induction event for Groups Conference.
After this session we aim to cover the following aims and support you in your knowledge and learnings.



After this session, you'll be able to...

...identify key
members of The
SU

... understand
how you
influence and
work within The
SU

...identify how to
make your
environment
inclusive

... understand
more on
sustainability

...know where to
go for support
for yourself and
how to signpost
others

... next steps for
training and
future learning

Welcome to The SU!

Here at the SU our officers are a big drive for empowering students and representing the students. Each has their own role but work together to ensure students are the centre of all activities. From lobbying for better community facilities. Speaking up in university boards, running events or chairing summits, your officers are here for you. These are the current officers for 24/25 and their role will end June 20th, ready for the new intake to come in – keep an eye out as you may see a familiar face!



Education Officer
Amber Snary



Community Officer
Benji



Activities Officer
David Lam



SU President
Jimena Alamo



Sport Officer
Olivia Warner



Postgraduate Officer
Zuber

Ryan Bird, CEO of The SU Bath

Our purpose

Students Making Student Life Happen.

Our Cause

We believe that students can and want to change the communities they are part of for the better. Through our student leaders and elected representatives, we create opportunities for student to come together, support each other and inspire them to make change and shape the world around them.

Our vision is one where students take part in The SU as active citizens within their communities, not just as consumers of services. We need to do this so we can deliver our cause and rise flexibly to the challenges ahead, marking a shift from delivering things for students, to working with students to develop and deliver things.



Our Values

Equitable, community-led, innovative, empowering and enriching

Our Strategic Themes

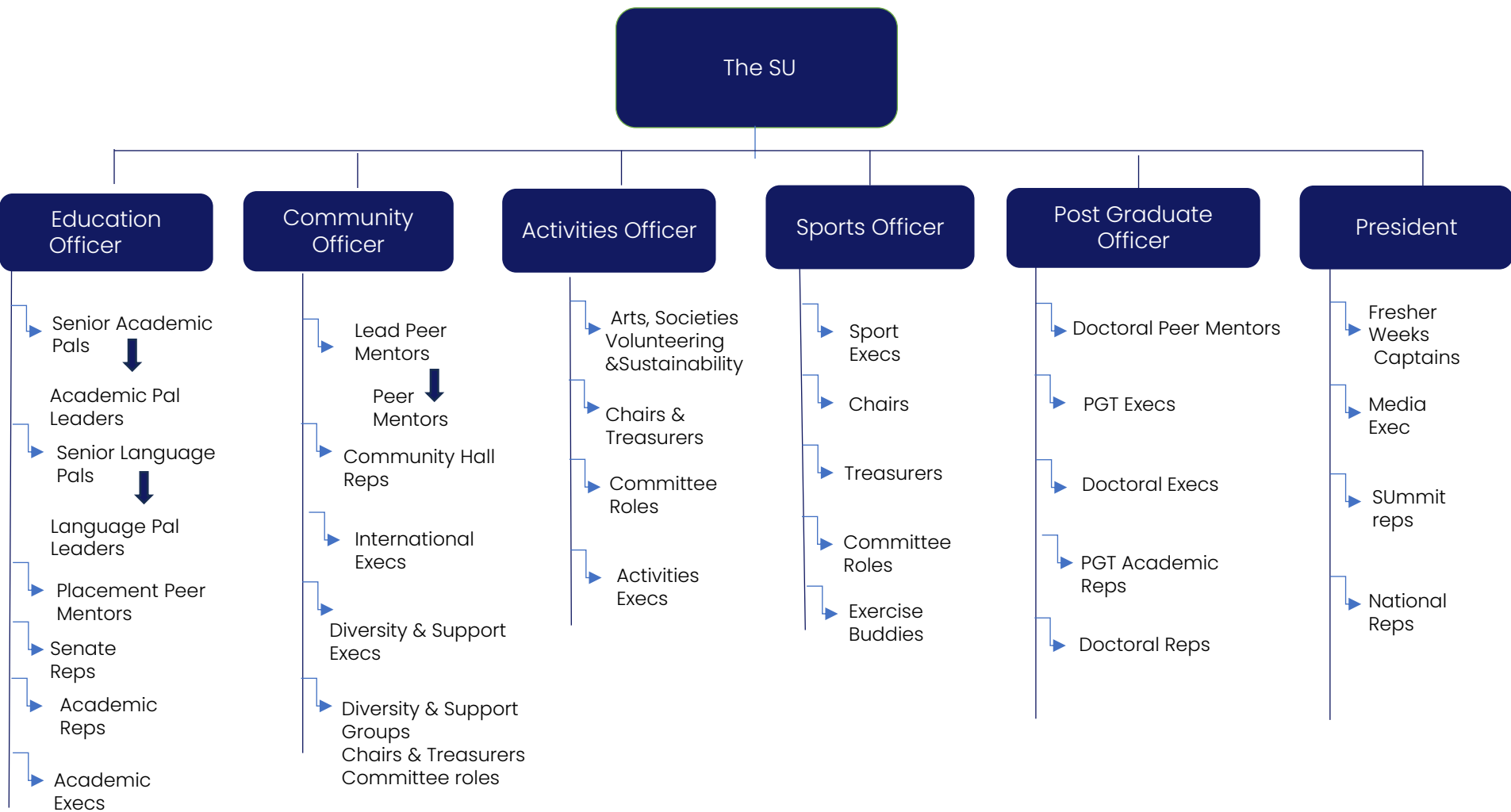
- Representative Student Voice
- Building Communities & Engagement
- Positive Health & Wellbeing
- Personal Development & Employability

The SU is not about the building, the SU is you, as students, and student leaders. It is you, as student leaders, who can really influence the way your groups runs and represent your fellow peers. We are here to support you in doing this, coaching you when needed, and guiding you with new ventures.

Our strategy have these 5 values imbedded within, Equitable, Community-led, Innovative, Empowering and Enriching. We ensure all our events, activities, trainings, workshops and general running of the SU cover these values because they matter and you matter!

Our strategic themes above ensure that all our work as staff and through the work as students will ensure the experience is a memorable one. This is why your role is so pivotal.

You have the power to change and influence others whilst creating a positive culture around you now and for the future.

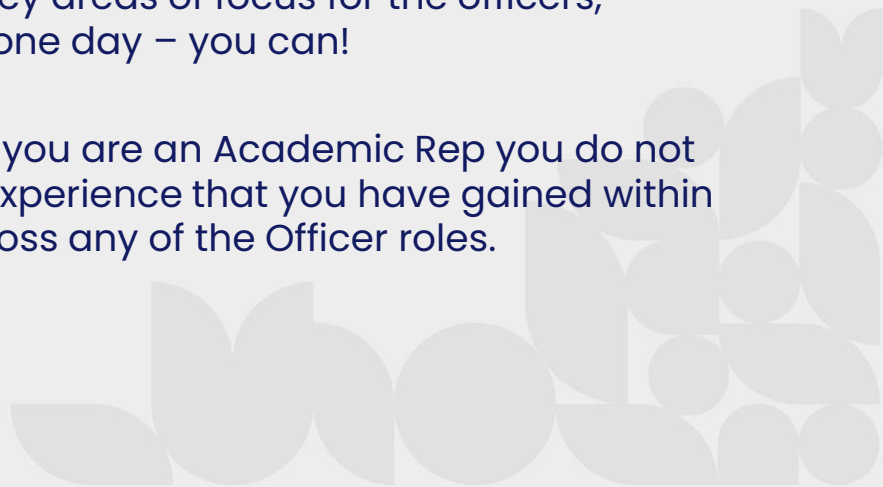


Within the SU we have so many student leader roles, from committee members in clubs, societies or groups to Peer support leaders and those working on Summit, Execs or Senate. Student leaders have the ability to support and empower from within.

This flow chart shows which Officer has overall responsibility for the positions eg if you are a chair of a sport club then your main link would be the Sport Officer. Working as a D&S Exec member? You would predominantly be overseen by Community Officer.

This flowchart is not linear however and often the student leader roles overlap with key meetings and representation. It also shows the key areas of focus for the officers, meaning if you would like to apply as an Officer one day – you can!

You do not have to stay in the same cluster eg if you are an Academic Rep you do not have to go for Education Officer, your skills and experience that you have gained within the roles you do means you can apply these across any of the Officer roles.





HELLO
HELLO
HELLO



MEET YOUR ELECTED OFFICERS



2025/26 SU Officer Team



Benji
SU President



Sam Ellis Hunt
Activities Officer



Angus Gueterbock
Sport Officer



Helen Slater
Education Officer



Sanya
Postgraduate Officer



Izzy
Community Officer

SU THE
SU VOICE

thesubath.com/elections



Say hello to your SU.

Here you will find the offices holding the teams and the Officers themselves. We welcome any emails of questions or queries or pop along and see one of us!

Located in the main SU on the parade are:

SU Advice and Support	suadvice@bath.ac.uk
Marketing	sumarketing@bath.ac.uk
Voice	su-voice@bath.ac.uk
Activities Officer	suactivities@bath.ac.uk
Sport Officer	susport@bath.ac.uk
Community Officer	sucommunity@bath.ac.uk
SU President	supresident@bath.ac.uk
Education Officer	sueducation@bath.ac.uk
Postgraduate Officer	supostgrad@bath.ac.uk

Located within the Edge building, level 1 and 2 are:

Arts	su-arts@bath.ac.uk
Volunteering	volunteers@bath.ac.uk
Peer Support	peersupport@bath.ac.uk
Finance	sufinance@bath.ac.uk
Societies	susocieties@bath.ac.uk
Transport	sutransport@bath.ac.uk
Sport	subathsport@bath.ac.uk



Inclusivity within The SU.

Inclusivity within roles is highly important. We want everyone to feel welcomed and part of our community, so ensure your ethos is the same. We do not expect you to be experts however and if you do not know what the best solution is then just ask us or any of the teams mentioned above, we are all here to support you and give advice and guidance.

Do you know where you can find targeted support for others (e.g. related to gender, sexuality, race and ethnicity or disability status)?

When suggesting a meet up, will the timing clash with cultural, religious or caring commitments?



Are you working alongside anyone under 18? Is your meet up age-appropriate? Do you know how best to safeguard them?

Have you undertaken the additional training on moodle? Is the building you are meeting in accessible? Will the noise level be appropriate?

Do students prefer to use the sensory room if they have a disability?

Does the meetup rely on people spending money? Not everyone has the same circumstances as you – consider spaces where you don't have to buy anything.

This is everyone's responsibility!

Remember you are not a counsellor.

Signposting is an important skill:

– Use Student Support, Group contacts, University Website, SU Website, Personal Tutors, Peer Mentors.

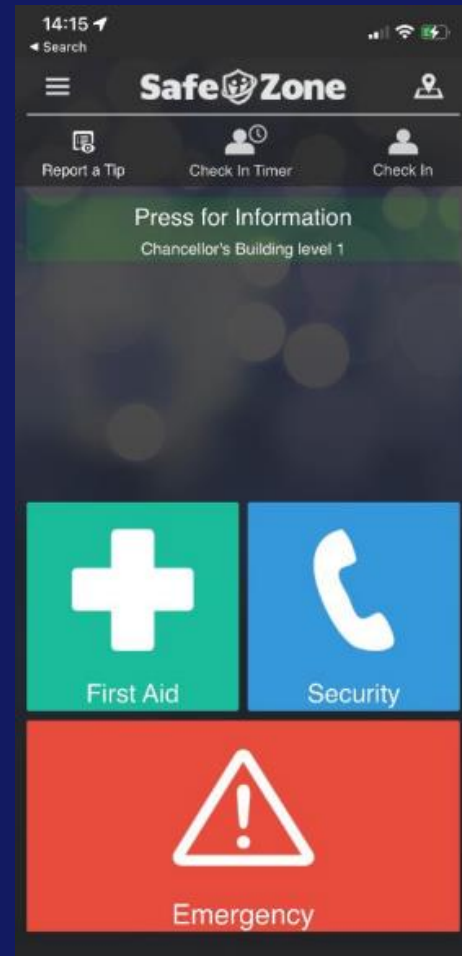
Top Tips

All student should have completed the Be the Change university training when arriving at Bath but if you didn't, still time to complete! There is also additional training available throughout the semesters about inclusion and Disability awareness through the Student Leader hub.

- Ensure you respect peoples rights in how they like to be addressed and referred to.
 - Use pronouns when introducing yourself
 - Remember to continue to use the correct pronouns even after someone has left the conversation
- If you are unsure of the pronunciation of someone's name – just ask!
 - Do not shorten it, or say “Can I call you ...?” .
- Be accountable – your words can affect others.
- Be an ally.
 - If you see something that isn't right do something about it
 - Support and report, intervention, delay
- Get trained up – The university offer a lot of workshops and tools to use such as Support and Report and the #Neverok campaign within the University



- Confidentiality must be kept unless the situation means the person is at risk or at risk of harming others. Only then you will need to ensure it is passed onto the relevant services.
- Do not agree to keep something a secret if it is of a sensitive nature.
- Any members of your group may talk with you about sensitive topics. You should not share these with others.
- The only exception is if it raises concerns about their safety, or someone else's safety. In this case, you should refer to SU Staff, Student Services and Advice and Support.
- It is useful to have the SAFE ZONE APP on your phone. Help is available at the push of a button.
- Security are trained in first aid, suicide intervention training and mental health first aid. This is also available if you live off-campus.
- In an emergency, you can contact Security on **01225 38 3999**.





You are a Student Leader!



As a Student Leader, you can:

- Access the Student Leader Hub on Level 1 of the Edge
- Enhance your CV and develop skills by signing up for skill development workshops on the Student Leader Online Training Hub (accessed via SU website).
- Workshops include; Facilitation 101, Public Speaking, Food Safety, Sponsorship etc
- Be aware of opportunities that come up that you can take part in.
- Be recognised for the work you do, and represent the student voice
- Opportunity to be nominated, and win Volunteer of the Month
- Opportunity to win awards, and attend award evenings
- Student Leaders is your gateway to finding the training, workshops or resources you need!

Next Steps – Online Training

- You will need to complete online training via moodle. Find these online sessions [Student Leaders](#) then click student Training Hub. For any of the bespoke sessions you can find these on the Resources page.
- Some training sessions have 2 sections eg Chair 1 and Chair 2
 - You must complete both!!
- Finance training has 3 sections
 - Training sessions 1 and 2 are online
 - Training session 3 – location TBC in the new semester
- You must have completed the 2nd Finance training by **28 July**.
 - If you do not complete the training, restrictions will be in place for your club.

Compulsory Training:

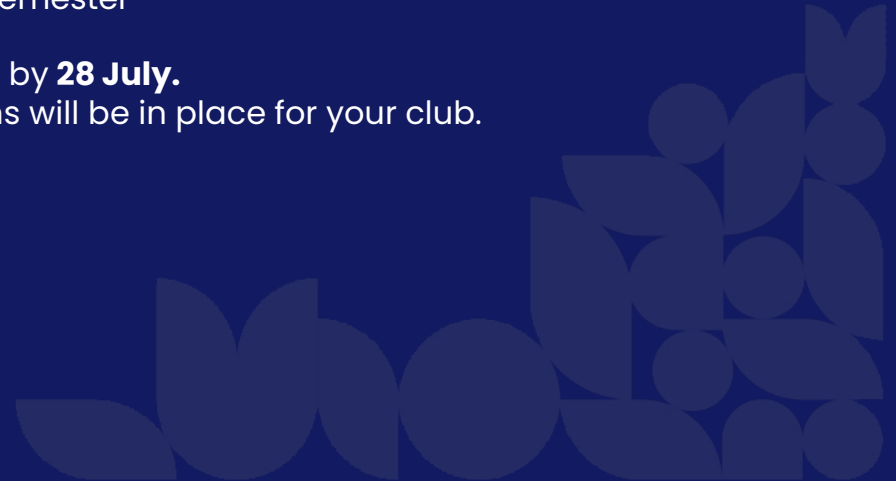
Chair – Chair and Finance modules

Treasurer – Finance Modules

Welfare Officer – Welfare Modules

Marketing Officer – Marketing Modules

Events officer – Event Management Modules



Any questions do not hesitate to contact us at the email address or any of the emails you saw earlier on in the presentation. Good luck with your role!

thesu@bath.ac.uk

01225 38 3800

thesubath.com



@thesubath

